

SET for solar power stations

SKY1450FOGSIT

Description:

The set for the solar power stations consists of a DC input radio-frequency interference suppression filter, sinusoidal filter, choke and line radio-frequency interference suppression filter. In case of synchronous operation of the inverters is possible to add a three-phase sinusoidal filter consisting of three single-phase chokes.

SKY1450FOGSIT



TECHNICAL PARAMETERS :

Nominal operating voltage
Extent of operating currents
Extent of operating temperature : 0°C + 40°C

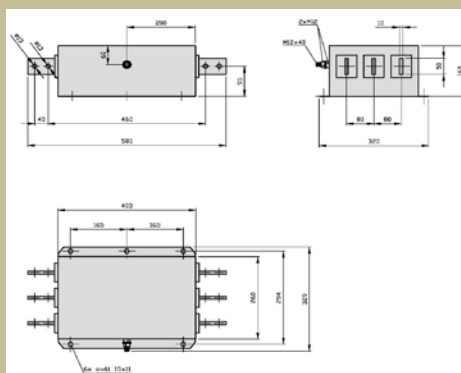
Un : 3x230/400Vac
In : 1450A

Type	Nominal current [A]	Nominal voltage	Weight [kg]	Conductor cross section [mm 2]	basic dimensions [mm]					
					length	height	width	pitch	pitch	other
SKY3FL1600B	1600	3x230/400Vac	25	50x10 2xØ13	580	160	329	330	294	11x15
SKY3TL1600-0,018	1600	3x230/400Vac	120	lug 1000x16x2	510	460	360	470	210	13x20
SKY3FSM1450-400	1450	3x230/400Vac	400	lug 800x16x2	550	484	798,5	510	450	13x20
SKY1FLDC1500C	1500	1200Vdc	16	60x10	480	130	231	200	204	11x15

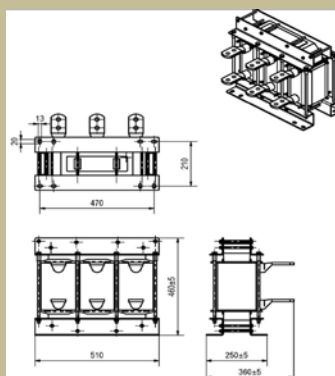
* After a deal there is a possibility of modification of the filter construction according to the customer's request.

Dimensional drawing :

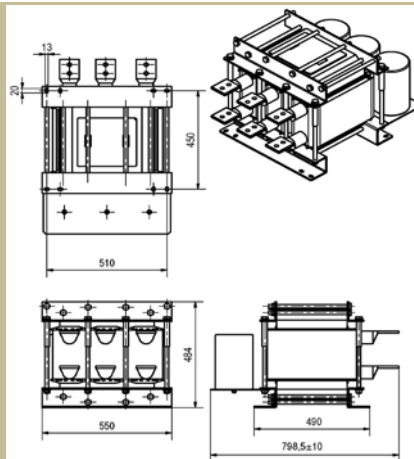
SKY3FL1600B



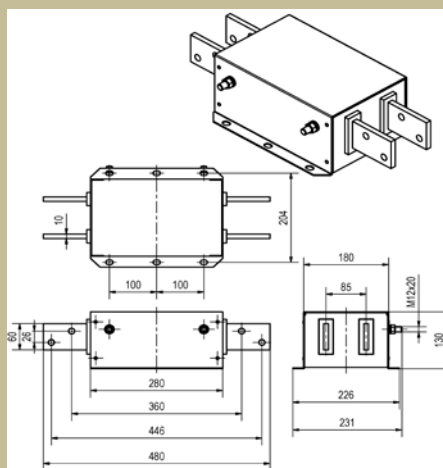
SKY3TL1600-0,018



SKY3FSM1450-400

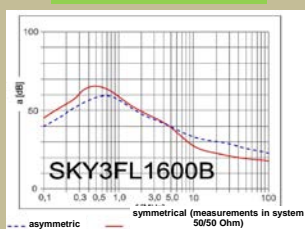


SKY1FLDC1500C



Attenuation characteristics:

SKY3FL1600B



SKY1FLDC1500C

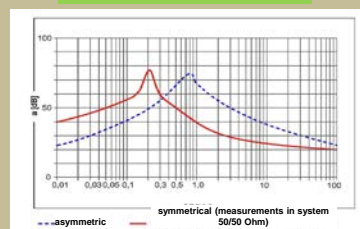
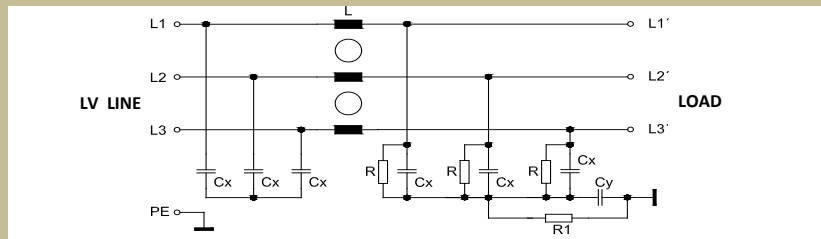
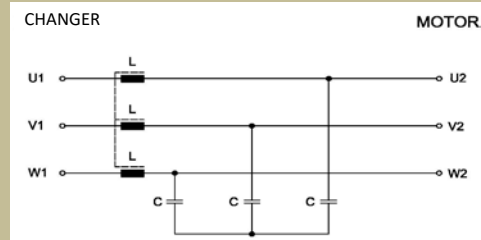


Diagram:

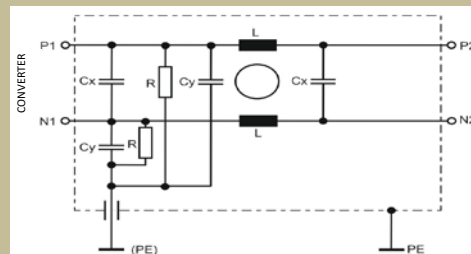
SKY3FL1600B



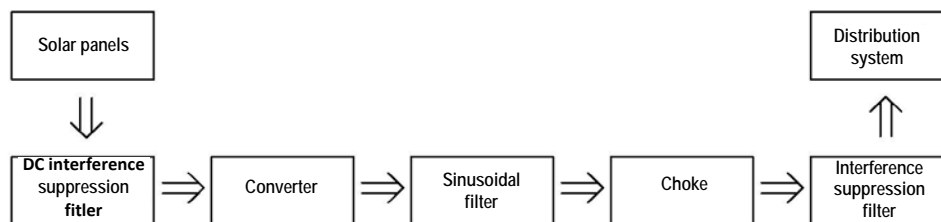
SKY3FSM1450-400



SKY1FLDC1500C



Principle diagram:



Dimensioning, wiring:

The DC interference suppression filter is supposed to be wired between the solar panels and converter. A low-frequency LCL filter, which consists of the sinusoidal filter and output choke, is supposed to be wired to the output side of the converter. The LC sinusoidal filter creates sinusoidal voltage from PWM converter. The L choke reduces inrush currents between the solar power station and LV line. The radio-frequency interference suppression filter, which reduces size of radio-frequency interference to distribution system from the converter, is supposed to be wired behind the output low-frequency LCL filter.