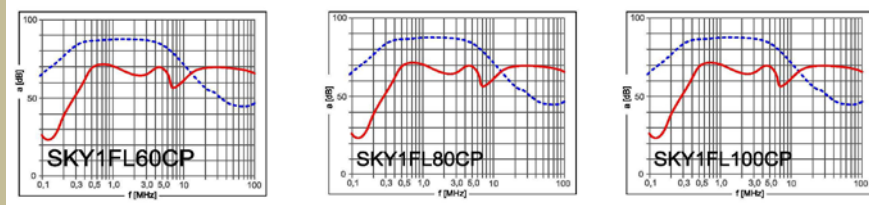
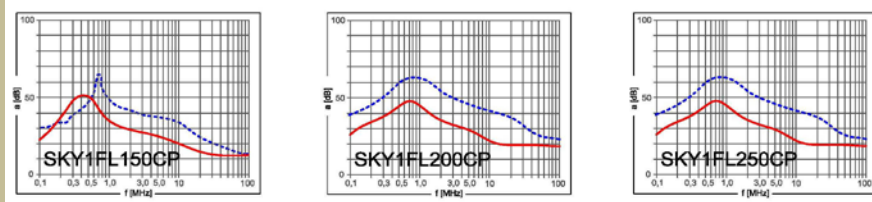


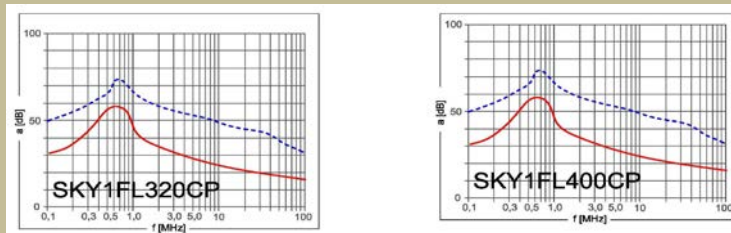
Attenuation characteristic:



--- asymmetric — symmetrical (measurements in the system 50/50 Ohm)

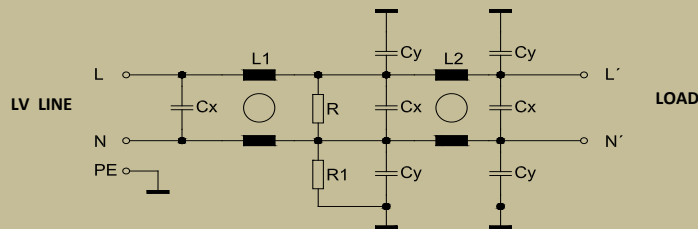


--- asymmetric — symmetrical (measurements in the system 50/50 Ohm)



--- asymmetric — symmetrical (measurements in the system 50/50 Ohm)

Diagram:



Use:

It is used to frequency converters and appliances which need supplemental interference suppression. For example: soft starters, pulse resources, thyristor controls and electronic units.

Dimensioning, wiring:

They are dimensioned according to indicated label nominal voltage and current values. Short-circuit protection must not exceed nominal current value. When installing into switchboards it is necessary to count with power loss of the filters although it is not as large as the power loss in chokes or in sinusoidal filters. But also it is necessary to provide for sufficient heat removal. When connecting it is necessary to meet the EMC requirements. There must not be any paralleling of interference-suppressed and non-interference-suppressed circuits. The grounding connections must be as short as possible and it is necessary to avoid any ground loops.