



Single-phase interference suppression filters, type TZS BT series

Description:

SKY1FL4BT, SKY1FL6BT, SKYBTL20 are single-phase radio frequency interference suppression filters. Low pass filter is created by combination of inductance L and condensers C. The low pass filter restricts radio frequency interference which is spread back to a feed array and also it increases interference resistance of the device coming from this feed array. Thanks to that a device life is prolonged.

SKY1FL4BT



SKY1FL6BT



SKYBTL20



TECHNICAL PARAMETERS:

Nominal operating voltage Un: 230Vac
Extent of operating frequencies f_n (for In) Fn: 50-60 Hz
Extent of operating currents In: 4A
Short-term overcurrent capacity : 50% In
Thermal class : B
Protection class : IP00
Extent of operating temperature : -10°C + 40°C

TECHNICAL PARAMETERS:

Nominal operating voltage Un: 230Vac
Extent of operating frequencies f_n (for In) Fn: 50-60 Hz
Extent of operating currents In: 6A
Short-term overcurrent capacity : 50% In
Thermal class : B
Protection class : IP00
Extent of operating temperature : -10°C + 40°C

TECHNICAL PARAMETERS:

Nominal operating voltage Un: 230Vac
Extent of operating frequencies f_n (for In) Fn: 50-60 Hz
Extent of operating currents In: 20A
Short-term overcurrent capacity : 50% In
Thermal class : B
Protection class : IP00
Extent of operating temperature : -10°C + 40°C

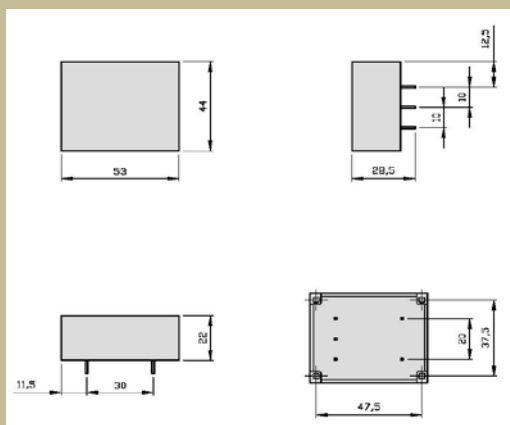
Type	Nominal current [A]	Leakage current 1*) [mA]	Weight [kg]	Conductor cross section [mm ²]	basic dimensions [mm]					
					A	B	C	D	E	F
					length	height	width	pitch	pitch	other
SKY1FL4BT	4	< 0,7	0,1	pin1,5x1,5	53	22/28,5	44	47,5	37,5	-
SKY1FL6BT	6	< 0,7	0,1	pin1,5x1,5	53	22/28,5	44	47,5	37,5	-
SKYBTL20	20	< 0,7	0,43	3x2,5	88	53,5	48	75	13,5	-

* After a deal there is a possibility of modification of the filter construction according to the customer's request.

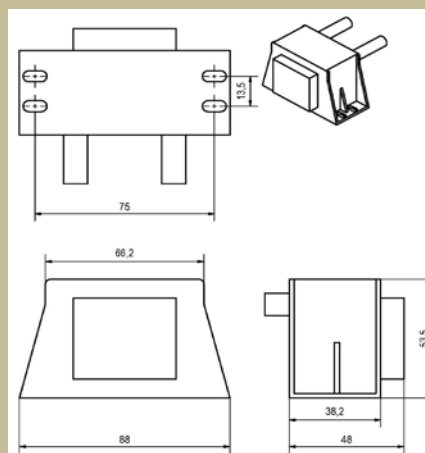
1*) Leakage current measurement was performed according to the standard ČSN EN 60950.

Dimensional drawing : SKY1FL4BT, SKY1FL6BT, SKYBTL20

SKY1FL4BT, SKY1FL6BT

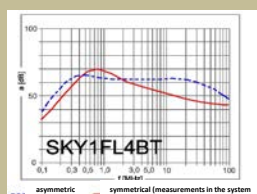


SKYBTL20

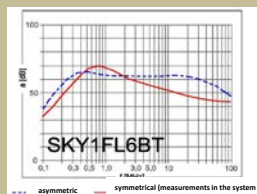


Attenuation characteristic:

SKY1FL4BT



SKY1FL6BT



SKYBTL20

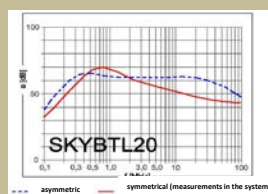
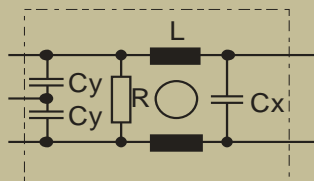


Diagram : SKY1FL4BT, SKY1FL6BT, SKYBTL20



Use:

The interference suppression filters **SKY1FL4BT** , **SKY1FL6BT** and **SKYBTL20** are intended for an assembly to a printed circuit.