

## Single-phase interference suppression filters, type TZS

### F series

#### Description:

SKY2F72P, SKY2F72P-P, SKY2P-N and SKY272P-N-rev.1 are single-phase radio frequency interference suppression filters. Low pass filter is created by combination of inductance L and condensers C. The low pass filter restricts radio frequency interference which is spread back to a feed array and also it increases interference resistance of the device coming from this feed array.

**SKY2F72P**



#### TECHNICAL PARAMETERS:

Nominal operating voltage                    In: 600Vac  
 Extent of operating currents                Un: 72A  
 Short-term overcurrent capacity : 50% In  
 Thermal class : B  
 Protection class : IP00  
 Extent of operating temperature : -10°C + 40°C

**SKY2F72P-P**



#### TECHNICAL PARAMETERS:

Nominal operating voltage                    In: 600Vac  
 Extent of operating currents                Un: 72A  
 Short-term overcurrent capacity : 50% In  
 Thermal class : B  
 Protection class : IP00  
 Extent of operating temperature : -10°C + 40°C

**SKY2F72P-N**



#### TECHNICAL PARAMETERS:

Nominal operating voltage                    In: 600Vac  
 Extent of operating currents                Un: 72A  
 Short-term overcurrent capacity : 50% In  
 Thermal class : B  
 Protection class : IP00  
 Extent of operating temperature : -10°C + 40°C

**SKY2F72P-N-rev.1**



#### TECHNICAL PARAMETERS:

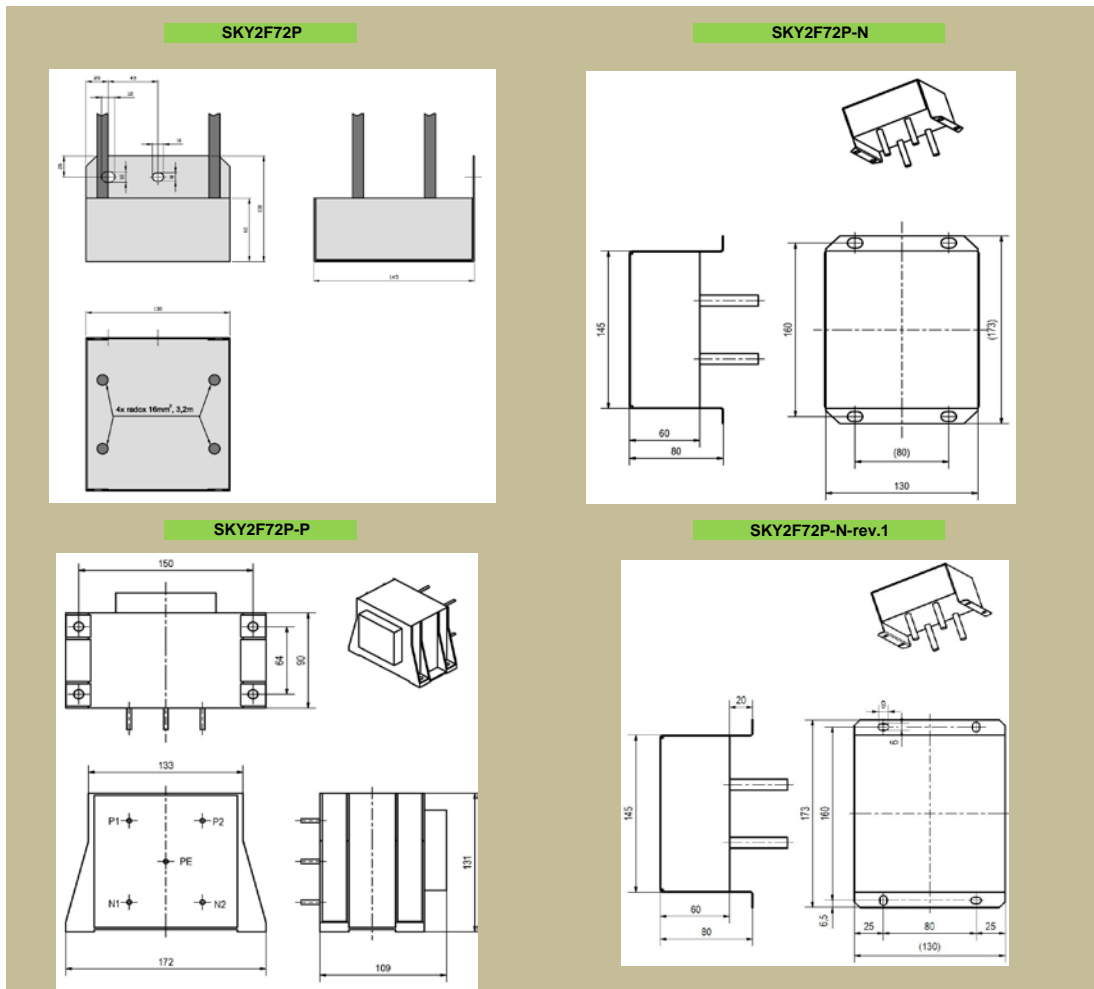
Nominal operating voltage                    In: 600Vac  
 Extent of operating currents                Un: 72A  
 Short-term overcurrent capacity : 50% In  
 Thermal class : B  
 Protection class : IP00  
 Extent of operating temperature : -10°C + 40°C

Type	Nominal current [A]	Leakage current 1*) [mA]	Weight [kg]	Conductor cross section [mm <sup>2</sup> ]	basic dimensions [mm]					
					A	B	C	D	E	F
					length	height	width	pitch	pitch	other
SKY2F72P	72	-	3,9	16	130	100	140	45	20	-
SKY2F72P-P	72	-	3,9	16	172	131	109	150	64	-
SKY2F72P-N	72	-	4,15	16	173	80	130	160	80	-
SKY2F72P-N-rev.1	72	-	4,2	16	173	80	130	160	80	-

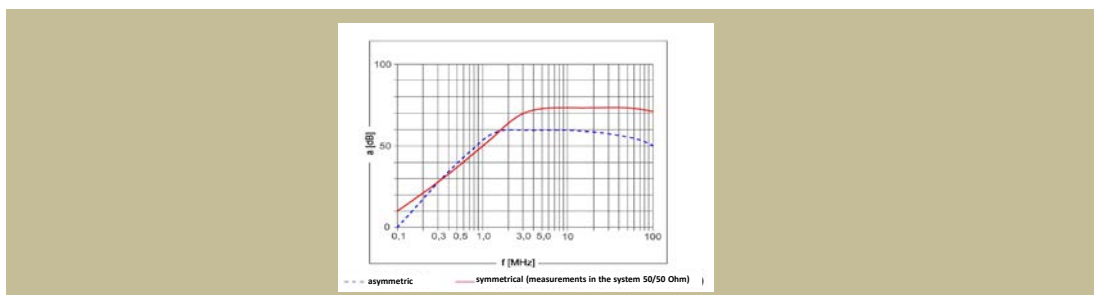
\* After a deal there is a possibility of modification of the filter construction according to the customer's request.

1\*) Leakage current measurement was performed according to the standard ČSN EN 60950.

### Dimensional drawing:

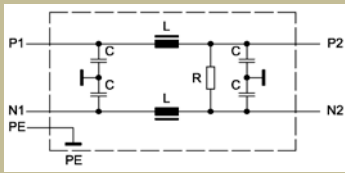


### Attenuation characteristic for SKY2F72P, SKY2F72P-N, SKY2F72P-P, SKY 2F72P-N-rev.1

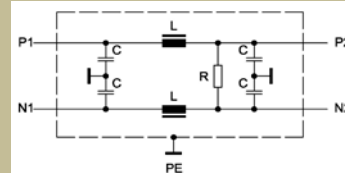


**Wiring diagram**

**SKY2F72P, SKY2F72P-P**



**SKY2F72P-N, SKY 2F72P-N-rev.1**



**Use :**

The interference suppression filters **SKY2F72P**, **SKY2F72P-P**, **SKY2F72P-N** and **SKY2F72P-N-rev.1** are intended for traction purposes.