

## Single-phase and three-phase interference suppression filters with high protection single-phase series: C

### Description:

**SKY1F20C** is a radio frequency single-phase interference suppression filter with high attenuation and low leakage current. Low pass filter is created by combination of inductance L and condensers C. The low pass filter restricts radio frequency interference which is spread back to a feed array and also it increases interference resistance of the device coming from this feed array. Thanks to that a device life is prolonged. The EMC requirements of the relevant ČSN EN... standards can be met by the filter assembly. When connecting it is necessary to meet the EMC requirements for its proper function, i. e. as short PE connection as possible and to avoid paralleling of inlet and outlet from the filter.



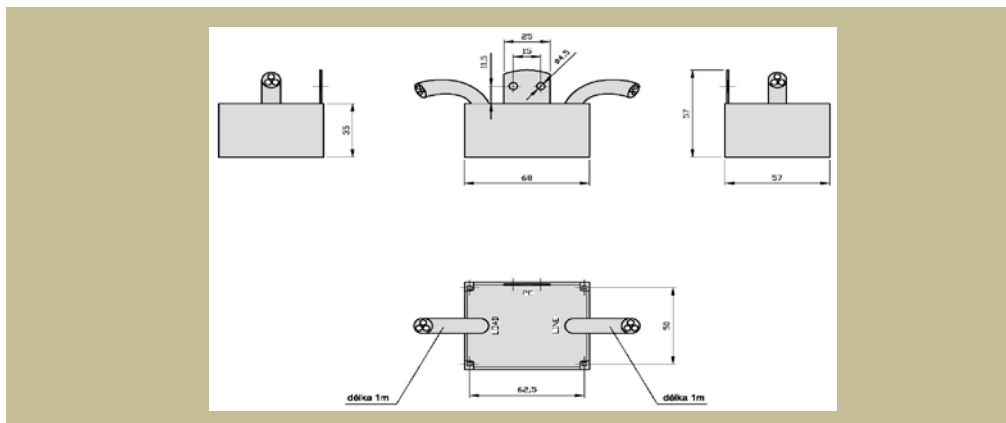
### TECHNICAL PARAMETERS SKY1F20C:

Nominal operating voltage	Un: 230Vac
Extent of operating frequencies $f_n$ (for In)	Fn: 50-60 Hz
Extent of operating currents	In: 20A
Short-term overcurrent capacity : 50% In	
Thermal class : B	
Protection class : IP67	
Extent of operating temperature : -10°C + 40°C	

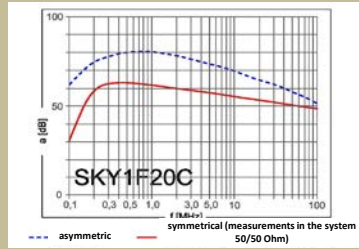
Type	Nominal current [A]	Leakage current 1*) [mA]	Weight [kg]	basic dimensions [mm]					
				A	B	C	D	E	F
				length	height	width	pitch	pitch	other
SKY1F20C-IP67	20	< 3.5	0,6	68	57	57	62,5	50	-

\* After a deal there is a possibility of modification of the filter construction according to the customer's request.  
 1\*) Leakage current measurement was performed according to the standard ČSN EN 60950.

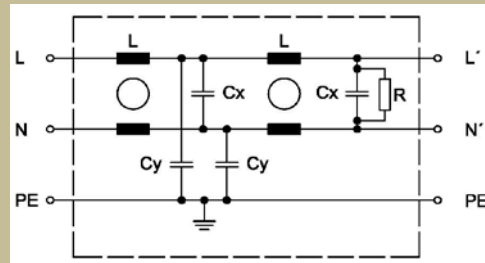
### Dimensional drawing for : SKY1F20C-IP67



**Attenuation characteristic:**



**Diagram:**



**Use:**

Because of the high level of protection it is intended for exacting surroundings with high humidity and with possible vibrations.