

Traction interference suppression filters SKY2KB500

series: 2KB

Description:

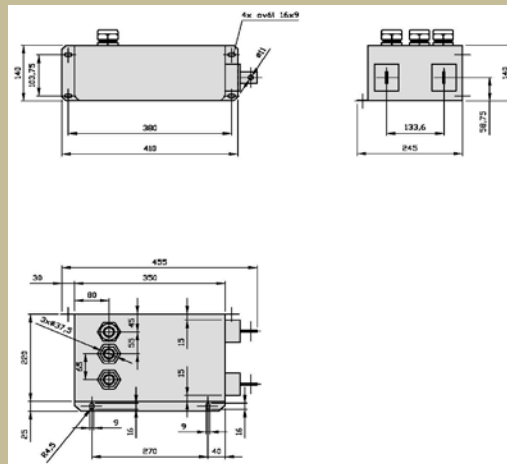
SKY2KB500 is a traction passive interference suppression LC filter produced by SKYBERGTECH company. It is connected so that it restricts quantity of radio frequency interference coming to the trolley wire from the traction vehicle. The filter is designed for outdoors.



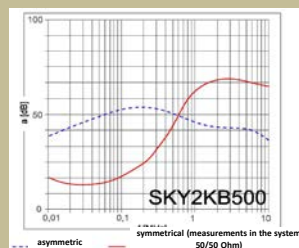
TECHNICAL PARAMETERS:

Nominal current	500A
Nominal voltage	750Vdc
Warming @ 500A	40°C
Warming @ 500A minimal flow 1m/s	30°C
Power loss @ 500A	32W
Weight	28kg
Testing voltage (22+21+31) - PE/2s	6kVdc
Surrounding temperature	from -40°C to +60°C

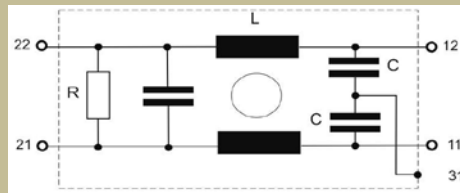
Dimensional drawing:



Attenuation characteristic:



Wiring diagram:



Service conditions:

If damage, exceeding of technical parameters and breach of service conditions not occur, an annual visual check of the filter will be enough. If the damage, exceeding of technical parameters or breach of service conditions occurs, it will be necessary to review or repair the filter by the producer.

An expected life is 10 years minimally if the technical parameters are not exceeded and the service conditions are not breached.

Use:

The filter is designed and engineered into a traction container.