

Description:

SKYTSK900-20



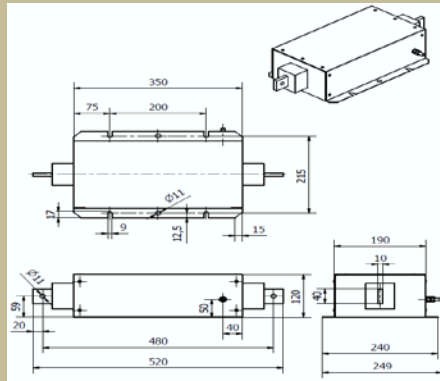
| | |
|------------------------------------|---------------------|
| Nominal current | 900A |
| Nominal voltage | 750Vdc |
| Weight | 15kg |
| Testing voltage (22+21+31) - PE/2s | 5kVdc |
| Surrounding temperature | from -40°C to +60°C |



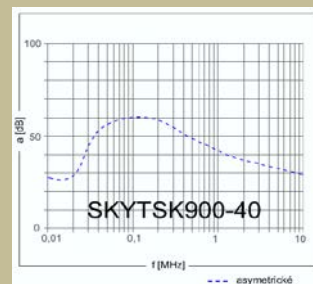
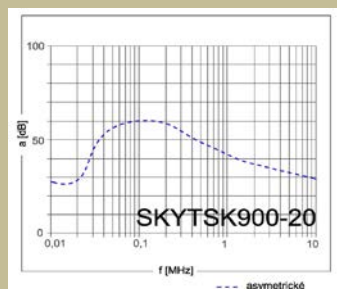
| | |
|------------------------------------|---------------------|
| Nominal current | 900A |
| Nominal voltage | 750Vdc |
| Weight | 15kg |
| Testing voltage (22+21+31) - PE/2s | 5kVdc |
| Surrounding temperature | from -40°C to +60°C |

| Type | Nominal current [A] | Leakage current 1*) [mA] | Weight [kg] | Conductor cross section [mm 2] | basic dimensions [mm] | | | | |
|--------------|------------------------|-----------------------------|----------------|-----------------------------------|-----------------------|--------|-------|-------|-------|
| | | | | | A | B | C | D | E |
| | | | | | length | height | width | pitch | pitch |
| SKYTSK900-20 | 700 | - | 15 | 40x5 | 500 | 120 | 249 | 200 | 215 |
| SKYTSK900-40 | 1000 | - | 15 | 40x10 | 520 | 120 | 249 | 200 | 215 |

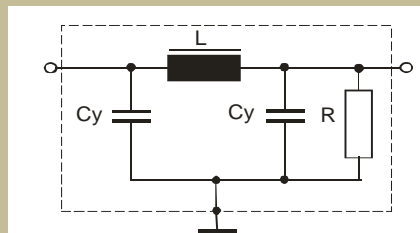
Dimensional drawing: SKYTSK900-40



Attenuation characteristic:



Wiring diagram : SKYTSK900-20



Service conditions:

If damage, exceeding of technical parameters and breach of service conditions not occur, an annual visual check of the filter will be enough. If the damage, exceeding of technical parameters or breach of service conditions occurs, it will be necessary to review or repair the filter by the producer.

An expected life is 10 years minimally if the technical parameters are not exceeded and the service conditions are not breached.

Use:

The filters are designed and engineered for outdoor traction.