

Filter that restricts rate of voltage rise

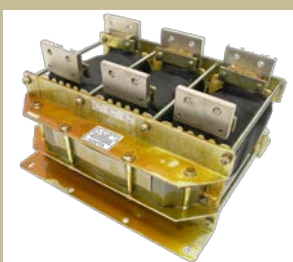
Funkce a popis :

SKY3TLUDUT1200, SKY3TLUDUT1000, SKY3TLUDUT1000-rev.1 are a filter which is intended to restrict the rate of voltage rise.

SKY3TLUDUT1200



SKY3TLUDUT1000



SKY3TLUDUT1000-rev.1



TECHNICAL PARAMETERS:

Nominal current	In : 1200 A
Nominal voltage	Un : 3x690 V
Inductance $\pm 20\%$	I : 16 μ H

TECHNICAL PARAMETERS:

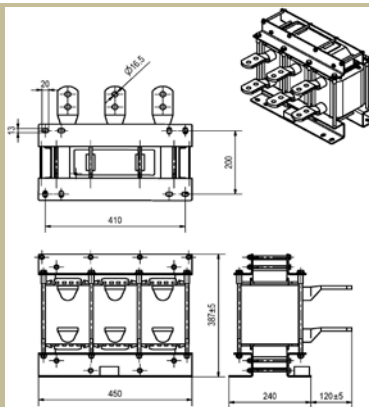
Nominal current	In : 1000 A
Nominal voltage	Un : 3x230/400 Vac
Inductance $\pm 20\%$	I : 0,01 mH

TECHNICAL PARAMETERS:

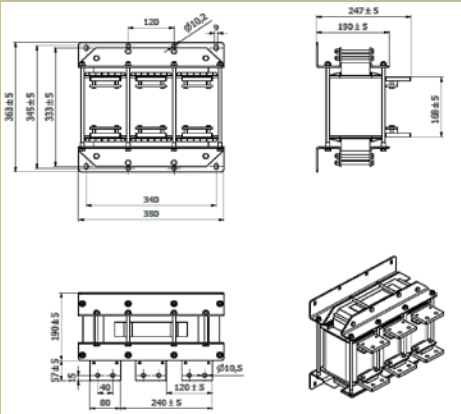
Nominal current	In : 1000 A
Nominal voltage	Un : 3x230/400 Vac
Inductance $\pm 20\%$	I : 0,012 mH

Type	Nominal current [A]	Voltage drop [%]	Weight [kg]	Conductor cross section [mm ²]	basic dimensions [mm]				
					A	B	C	D	E
					length	height	width	pitch	pitch
SKY3TLUDUT1200	1200	690	105	oko 500x16,5x2	450	387	360	410	200
SKY3TLUDUT1000	1000	3x230/400	55	2x Ø10,5	380	247	363	340	345
SKY3TLUDUT1000-rev.1	1000	3x230/690	55	oko 500x16	380	272	363	340	345

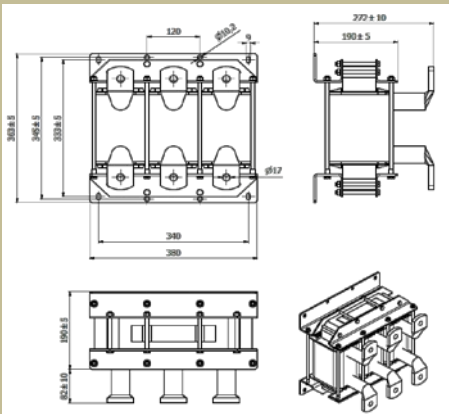
Dimensional drawing SKY3TLUDUT1200 :



Dimensional drawing SKY3TLDUDT1000 :



Dimensional drawing SKY3TLDUDT1000-rev.1 :



Use:

It is used where we have big distance between the converter and motor. The filter restricts the rate of voltage rise on appliance (motor) terminals and it also decreases the size of electromagnetic emission.

Dimensioning, wiring:

It is dimensioned according to the indicated label values. When installing into switchboards it is necessary to count with power loss of the filter and provide for removal of heat loss by the help of a suitably placed ventilator.